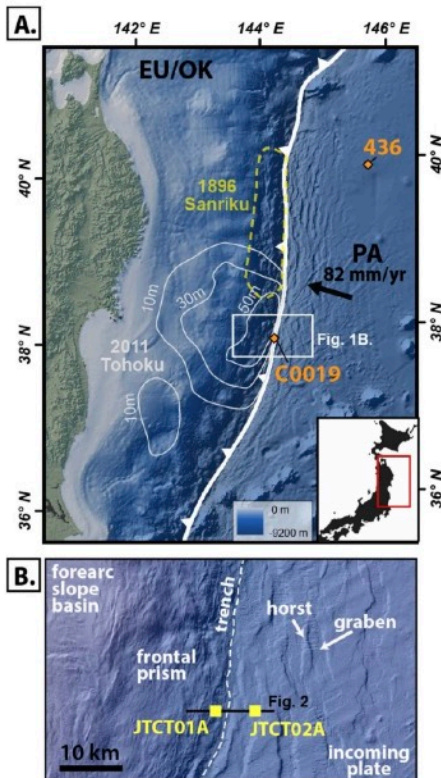


Special Call for Participation in IODP Exp 405:

Sedimentologist and Paleomagnetist

JTRACK

Tracking Tsunamigenic Slip Across the Japan Trench



MarE3 currently plans to implement IODP Expedition 405: JTRACK - Tracking Tsunamigenic Slip Across the Japan Trench, beginning on 12 September 2024. IODP Expedition 405 will visit two sites (Figure 1) that comprise a transect across the trench from undisturbed sedimentary rocks on the Pacific Plate (JTCT-02A) to a site within the overriding plate that will access the fault zone in the region of large, shallow slip in the 2011 Tohoku-oki earthquake (JTCT-01A). Site JTCT-01A is located ~6 km landward of the trench, in the frontal prism, and is co-located with IODP Exp 343 site C0019 (Figure 1). Site JTCT-02A is located on the incoming plate, ~8 km seaward of the trench. LWD and coring operations at this site will provide critical information on the physical, chemical, and mechanical properties of input materials to the subduction zone, as well as on the amount of fluids entering into the subduction zone.

Figure 1. Location maps of the study area. A. Map showing the tectonic configuration at the Japan trench, the rupture area of the 2011 Tohoku-oki rupture (slip contours in white, after Iinuma et al., 2012), and the locations of existing IODP Site C0019 and DSDP site 436. EU/OK = Eurasian or Okhotsk Plate. PA = Pacific Plate B. Inset map showing major physiographic features of the Japan trench, the locations of proposed drill sites JTCT-01A and JTCT-02B.

Scientific Objectives of the expedition

The overall goal of Expedition 405 is to establish the properties, processes, and conditions within subduction zones that promote large slip to the trench and contribute toward the generation of large tsunamis. To meet this goal, Expedition 405 will undertake a coordinated strategy of LWD, coring, and observatory installation to achieve a series of objectives that together will develop a comprehensive description of the mechanical properties and conditions relevant to earthquake slip: 1) the stress and strain conditions within and around the fault zone and their variation over space and time, 2) the subsurface geology including the physical rock properties affecting fault slip behavior and strain localization, as well as the geologic record of past earthquakes and tsunami, 3) the hydrogeology of the fault zone – including the hydrogeologic structure of faults, fractures, and permeable zones around the plate boundary and their influence on effective stress and earthquake mechanics and the variation of conditions over time.

Secondary science objectives include carrying out other geological, geochemical, and microbiological observations to the greatest extent possible during drilling in accordance with the D/V *Chikyu* Standard Measurements Document (<https://www.iodp.org/chikyu-policies-procedures-guidelines>). Please read the

Expedition 405 Prospectus for further details (available for download here: http://publications.iodp.org/scientific_prospectus/405/).

Operation Plan

The operational sequence to be completed during IODP Expedition 405 consists of:

1. Drilling an 8-1/2-inch hole with logging while drilling (LWD)/measurement while drilling (MWD) to total depth (TD), currently planned for 950 mbsf at Site JTCT-01A and 450 mbsf at Site JTCT-02A
2. Coring a 10-5/8-inch hole with the Rotary Core Barrel (RCB) system to 950 mbsf at Site JTCT-01A and to 450 mbsf at Site JTCT-02A.
3. Jetting a 20-inch casing and wellhead, drilling 10-5/8-inch hole to 950 mbsf and installing 4-1/2" Tubing (TBG) with multisensor temperature measurement string at Site JTCT-01A.

Expedition Schedule

Current plans have the expedition beginning on 6 September 2024, and finishing upon return to port on 20 December 2024. This schedule is subject to change. Updates and the latest information can be found on the MarE3 website (<https://www.jamstec.go.jp/chikyu/e/exp405/>). The total number of planned offshore operations days will be 106 days. The Science Party will be divided into two teams. Each team will consist of about 25 scientists and will be onboard around 8 weeks. The Expedition Co-chiefs and PCT members will assign scientists for each window, based on the science targets outlined in their science plans for the expedition. The onboard Science party members will embark and disembark by helicopter thus the OPITO approved Helicopter Underwater Escape Training (HUET) certificate is required for all onboard science party members.

Table 1. D/V Chikyu Schedule for FY24

Exp.#	Expedition Name	Schedule	Duration	Co-chief Scientists	EPM
405	JTRACK - Tracking Tsunamigenic Slip Across the Japan Trench	6 September - 20 December, 2024	106 days	Shuichi Kodaira, Marianne Conin, Patrick Fulton, Jamie Kirkpatrick, Christine Regalla, Kohtaro Ujiie	Lena Maeda, Natsumi Okutsu, Nobu Eguchi, Sean Toczko

Remarks:

(1) All expedition schedules are subject to change based on FY budgetary situation and site conditions.

APPLICATION DEADLINE: 5 April September 2024

WHO SHOULD APPLY: We encourage applications from all qualified scientists. ECORD is committed to a policy of broad participation and inclusion, and to providing a safe, productive, and welcoming environment for all program participants. We are looking for 2 researchers (including graduate students) with expertise in sedimentology , or paleomagnetism. Good working knowledge of the English language is required.

The Application Process is open to scientists in all ECORD member countries. Please download the *Apply to Sail* general application form from the ESSAC webpage:

<http://www.ecord.org/expeditions/apply-to-sail/>

Please, fill out all applicable fields and send the form to the ESSAC office by email (essac@ogs.it) with the following additional documents by the deadline of **5 April 2024**:

1. **A letter of interest** outlining your specific expertise, previous involvement in DSDP/ ODP/ IODP expeditions, research interests, primary research goals of your proposed participation.
2. **CV and publication list.**
3. **Early career researchers** must additionally provide a **letter of support** from their host institution, including information on post-cruise science support.

All applications should state how you intend to achieve your proposed scientific objectives, with information on the funding scheme and support from your institution or national funding agencies. More information can be found under: <http://www.ecord.org/expeditions/apply-to-sail/>

In addition to the ESSAC application, all applicants must inform their national office or national delegate and send them a copy of their application documents. The national offices or national delegates can also provide information regarding travel support, post-cruise funding opportunities, etc.
See <http://www.ecord.org/about-ecord/about-us/> for a list of the national contact persons.

For further information or questions, please contact the ESSAC Office:

ECORD Science Support & Advisory Committee

Angelo Camerlenghi (ESSAC Chair)

Hanno Kinkel (ESSAC Science Coordinator)

Istituto Nazionale di Oceanografia e di Geofisica Sperimentale - OGS

via Beirut n. 2

34151 Trieste - Italia

e-mail: essac@ogs.it

website: www.ecord.org

